

# China—

Chris van Uffelen



## The New Creative Power in Architecture

BRAUN

Studio

14 – 21

## Introduction

Chris van Uffelen \*

22 – 27

## Coordination Asia

Zhang Lin, Tilman Thürmer

28 – 33

## Bao Wei

## Architecture Office

Wei Bao

34 – 39

## LLLab.

Hanxiao Liu, Luis Ricardo, David Correa, Taichi Kuma

40 – 45

## DnA\_Design and

## Architecture

Xu Tiantian

Project

Project: Rainbow Chapel  
Project Location: Shanghai

Project: Rooftop House  
Project Location: Beijing

Project: San Sa Village  
Project Location: Beigou Village

Project: Dushan Leisure Center  
Project Location: Lishui

Studio

46 – 51

## People's

## Architecture Office

Zhe He, James Shen, Feng Zang

52 – 57

## 3andwich Design

Wei He, Long Chen

58 – 63

## RoMoO Design

Hui Zhang, Rui Zhang, Tao Zhang, Marine Bois

64 – 69

## Taolei Architectural

## Design

Tao Lei

70 – 75

## B.L.U.E.

## Architecture Studio

Shuhei Aoyama

76 – 81

## Shing & Partners

## Design Group

Eric Shing

Project

Project: Shangwei Village Plugin Houses  
Project Location: Shenzhen

Project: Limestone Gallery  
Project Location: Dushan

Project: Canada Goose Shanghai Office  
Project Location: Shanghai

Project: Own House of Architect  
Project Location: Beijing

Project: Ota Fine Arts Gallery  
Project Location: Shanghai

Project: The Landmark  
Project Location: Guangzhou

\* In Chinese, personal names state the surname first, followed by the given name. Because of the international scope of this publication and in accordance with recognized standards, all personal names are written in the western sequence, i.e. with the given name followed by the surname. Exceptions are marked by a red asterisk.

Studio

82 – 87

CLOU architects

Jan Clostermann, Zhi Zhang, Jianyun Wu, Lin Li, Weiming Li

88 – 93

Atelier Alter

Architects

Xiaojun Bu, Yingfan Zhang

94 – 99

Crossboundaries

Binke Lenhardt, Hao Dong

100 – 105

Sò Studio

Yifan Wu, Mengjie Liu

106 – 111

U10 Atelier CADG

Haiwei Yu

112 – 117

CU Office

Fei Che, Xuefeng Zhang

Project

Project: Vantone Center  
Project Location: Hangzhou

Project: BIT Sports Center  
Project Location: Beijing

Project: Beisha Village Kindergarten  
Project Location: Beisha Village

Project: The Beast Takoo LI Store  
Project Location: Beijing

Project: Hulunbuir Hailar Airport Expansion  
Project Location: Hulunbuir

Project: Villa Jian Art Museum  
Project Location: Yantai

Studio

118 – 123

Superimpose

Architecture

Carolyn Leung, Ben de Lange, Ruben Bergambagt

124 – 129

HHDFUN

Zhenfei Wang, Luming Wang

130 – 135

Scenic Architecture

Office

Xiaofeng Zhu

136 – 141

MTMdesign

Max Trullás, Fanghai

142 – 147

Atelier DYJG

Qing Lin, Xiangrong Wang

148 – 153

Luo Studio

Luo Yujie

Project

Project: CO2 Pavilion  
Project Location: Beijing

Project: Dichi Service Center  
Project Location: Qingdao

Project: Shanghai Google Creators' Society Center  
Project Location: Shanghai

Project: Heritage by Madison  
Project Location: Shanghai

Project: Quarry Gardens  
Project Location: Nanning

Project: Longfu Life Experience Center  
Project Location: Puyang

Studio

154 – 159

Miao Design Studio

Pu Miao

160 – 165

Group of Architects

Hao Lu

166 – 171

Hallucinate Design

Office

Wenfang Wang

172 – 177

Interval Architects

Yunduan Gu, Oscar Ko

178 – 183

Temp

Howard Jiho Kim

184 – 189

ZZHK Architects

Zhang Ke

190 – 195

Yuan Ye Architects

Ye Yuan

Project

Project: Visitor Center, Xingxi Park  
Project Location: Kunshan

Project: Ailia Wuzhen  
Project Location: Wuzhen

Project: Midwest Inland Port Financial Town  
Project Location: Xi'an

Project: Tower of Bricks  
Project Location: Hengshui

Project: Aija Teahouse  
Project Location: Hangzhou

Project: Ruyi Bridge  
Project Location: Chengdu

Project: Bozhou Gymnasium  
Project Location: Bozhou

Studio

196 – 201

Atelier XÜK

Xu Zhang, Kenan Liu

202 – 207

SWA Group

René Bihan, Ye Luo, Jim Lee

208 – 213

Neri&Hu Design and

Research Office

Lyndon Neri, Rossana Hu

214 – 219

O&O Studio

Eric Chan, Suzanne Li, Katt Chung Yap

220 – 225

aoe

Larry Wen

226 – 231

Benjai Architecture

Qiao Xuesong, Li Xiang

232 – 237

RhineScheme

Lei Yang, Ran Li, Wolf Loebel

Project

Project: Lost Villa Qinyong Primary School Hotel  
Project Location: Ningbo

Project: Poly Future City  
Project Location: Beijing

Project: Number 31  
Project Location: Shanghai

Project: Atelier Intimo Flagship  
Project Location: Shanghai

Project: Courtyard NO.1  
Project Location: Heze

Project: Nanjing Injoy Plaza  
Project Location: Nanjing

Project: IPPH-Headquarters  
Project Location: Beijing

238 – 243

## Continuation Studio

Jiujiang Fan

244 – 249

## March Design

Wang Tao

250 – 255

## Challenge Design

Jie Li

256 – 261

## AT Design

Mo Shen

262 – 267

ZJJZ

Sean Shen, Yu-Ying Tsai, Xuanru Chen

268 – 273

## MenJue Architects

Manjun Huang, Tingting He, Fei Liu

274 – 279

## Zhang Hua Studio

Hua Zhang

Project: The Terraced House  
Project Location: DinghaiProject: Wang Tao House  
Project Location: DaliProject: Langtin Yuanzhu Experience Hall  
Project Location: WuhanProject: Lalaye Hostel  
Project Location: HuzhouProject: Dafa Canal Tourist Information Center  
Project Location: ZunyiProject: Shadow of Space Baishuiquan Tea House  
Project Location: ShanghaiProject: Yu Qingcheng Gallery  
Project Location: Tianjin

280 – 285

## Atelier L+

Linxue Li

286 – 291

## Ida&amp;Billy Architects

Ida Sze, Billy Chan

292 – 297

## Nota Architects

Shiyun Qian

298 – 303

## MAD Architects

Ma Yansong, Dang Oun, Yosuke Hayano

304 – 309

## Praxis d'Architecture

Shaohua Di, Xinxin Xu, Xuewei Zhang, Jialin Yang

310 – 315

## Hui Wang | Urbanus

Hui Wang

316 – 321

## AZL Architects

Lei Zhang

Project: Yellow River Ecological Tourist Wharf  
Project Location: DongyingProject: Bridged House  
Project Location: Hong KongProject: Seesaw the Garden  
Project Location: SuzhouProject: YueCheng Courtyard Kindergarten  
Project Location: BeijingProject: Tian Yun Industrial Office Complex  
Project Location: BeijingProject: Botanic Garden Expo 2019  
Project Location: BeijingProject: CIPEA No.4 House  
Project Location: Nanjing

322 – 327

Studio Zhu Pei

Pei Zhu

Project: Jingdezhen Imperial Kiln Museum

Project Location: Jingdezhen

328 – 333

Turenscape

Kongjian Yu

Project: Moon-Floating Temple

Project Location: Suining

334 – 339

Wutopia Lab

Ting Yu, Erni Min

Project: Eight Tenths Garden

Project Location: Shanghai

340 – 345

Atelier Archiplein

Feng Yang, Marlène Leroux, Francis Jacquier, Fang Weiyi,  
Wang Mingbo

Project: Tianzhushan Tourist Infrastructure

Project Location: Tianzhushan Mountain

346 – 349

Studio Index

349 – 351

Picture Credits

# Sandwich Design

Portrait  
Sandwich Design

Studio Location  
Beijing

52  
53



Wei He

a **B Garden**  
Location  
Xinyang  
Completion 2017

b **Stone Nest Amphitheater**  
Location  
Wujiatuan Village  
Completion 2019

c **Shangping Village  
Regeneration**  
Location  
Xijuan  
Completion 2017

d **Restoration and Recon-  
struction of Geng Tang  
Hall**  
Location  
Hongguan Village  
Completion 2019

3andwich Design was founded in 2012 by Wei He, born in 1973, and Long Chen, born in 1990. The studio gets supported from authoritative academic institutions including Central Academy of Fine Arts, Tsinghua University, and China Architectural Society. Their design concept emphasizes humanism, dialogue between history and contemporary, and interaction between natural environment and regional culture. 3andwich Design focuses on cross-border thinking and dedication to rural architecture design especially in undeveloped areas of China. The studio not only pays attention to the preliminary planning and construction on site but also to the linkage between management and media communication. It regards these sections as an interrelated whole as it believes that architectural design should embrace relevant disciplines and integrate them.



Long Chen



a



b

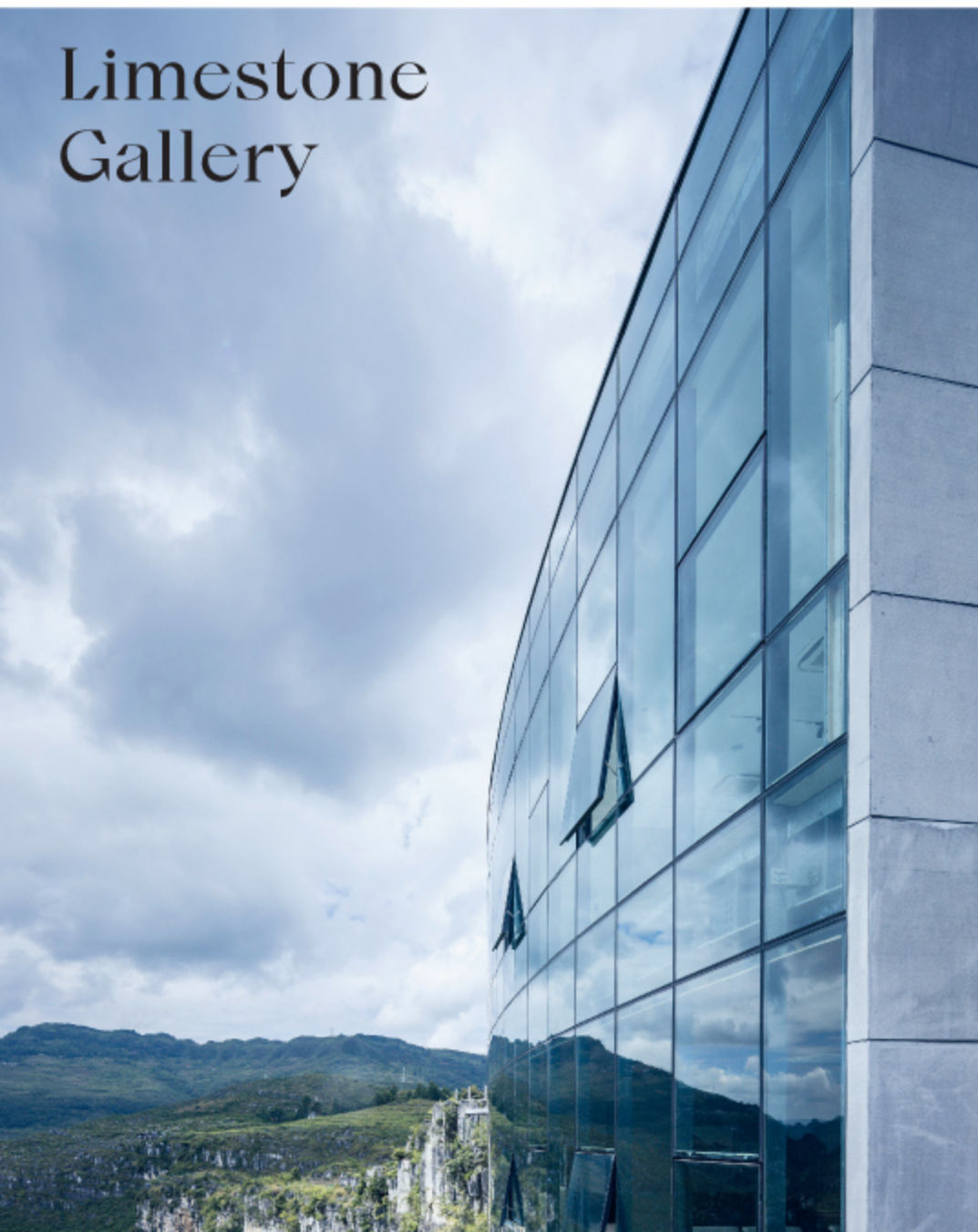


c



d

# Limestone Gallery



Project  
Limestone Gallery

Project Location  
Dushan

54  
55

## Location

Dushan Town, Anlong  
County, China

Building type culture

Completion 2017

Client Anlong Heyun

Tourism and Cultural  
Development Co., Ltd

Gross floor area 1,350 m<sup>2</sup>



a



b

Limestone Gallery is located on the Haiwei Canyon which has become a paradise for outdoor sports like rock climbing. It is surrounded by mountains and lies above a river meandering from hundreds of miles away. The building was constructed together with the Mountain Journey company and the TYMJ Home Furnishing studio in the shape of a non-symmetrical crescent and contains two floors, including different areas for exhibition, conference and service. The very bottom floor is designed as an outdoor lounge space. A large part of the construction work, such as site leveling and large size materials transporting, was done manually by local labors, due to the particular location of the site. The façade of Limestone Gallery was designed with curved glass walls, offering a contrast to the solid mountains around. Through the reflection of the glass the building seems to be hidden on top of the cliff. Visitors can experience a magnificent panoramic view of the Haiwei Canyon from the rooftop which is being used as a viewing point. From there one can see the Tourists' Center which was also created by Sandwich Design studio.





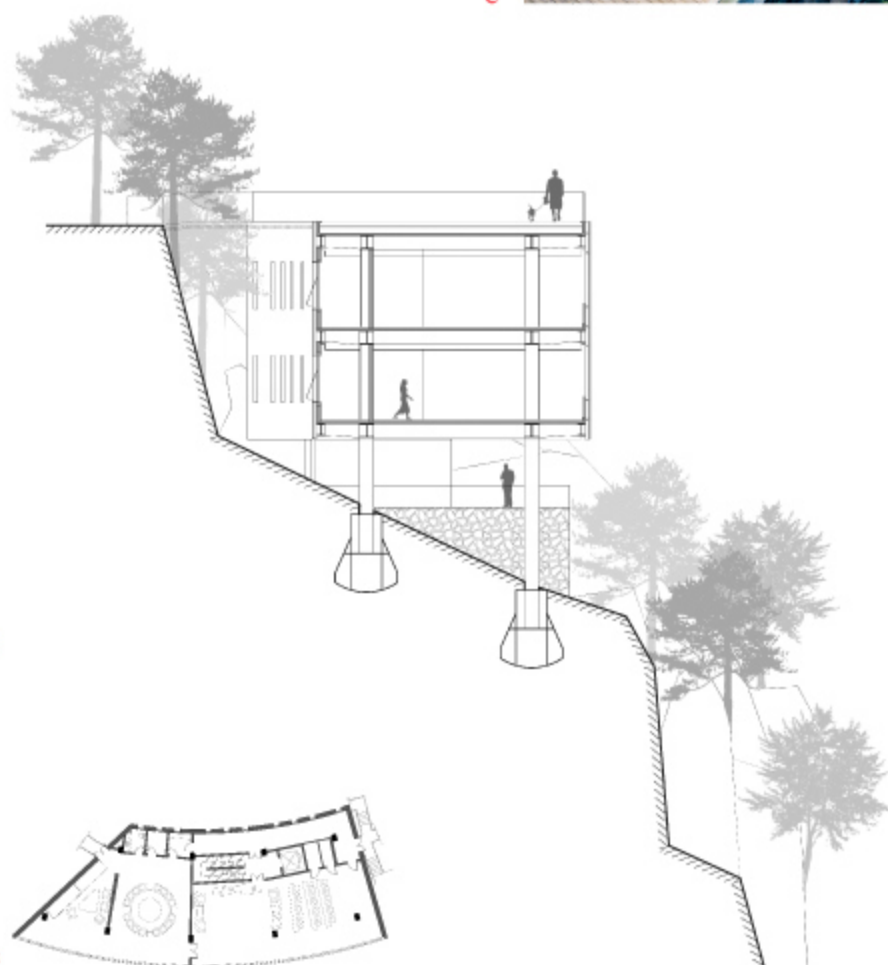
c



e



d



f

g

# Atelier Alter Architects

Portrait  
Atelier Alter Architects

Studio Location  
Beijing

88  
89

Xiaojun Bu, Yingfan Zhang



a **Qijing Culture Center**  
Location  
Qijing  
Completion 2015

b **Yingfang Stone Archive**  
Location  
Beijing  
Completion 2016

c **Yingfang Stone Natural History Museum**  
Location  
Xiamen, Fujian  
Completion 2020

d **WuEpoch Culture Center**  
Location  
Beijing  
Completion 2019

e **Yingfang Stone Archive**  
Location  
Beijing  
Completion 2018

Atelier Alter Architects is based in Beijing and New York and is led by two partners – Xiaojun Bu, born 1980, and Yingfan Zhang, born 1981. Since the inception in 2009 the office has won numerous accolades. Noted for creating projects through critical analysis of the site, the works strives for transferring the physical and metaphysical context of the site into tangible yet artistic spaces of historical remembrance. Atelier Alter Architects is a cross-disciplinary practice that expands the boundary of architecture into the spatial dialogue with art, media, philosophy, and theatrical performance. On top of that, the portfolio ranges from small-scale furniture design to culture, civic, institutional projects as well as large-scale urban design. The architects try to manifest ideas of significance – ideas that offer critics rather than imitations.



a



b



c



d



e

# BIT Sports Center



## Location

Fangshan District,  
Beijing, China

Building type sports facility

Completion 2019

Client Beijing Institute of  
Technology

Gross floor area 15,692 m<sup>2</sup>

Project  
BIT Sports Center

Project Location  
Beijing

90  
91



a



b

The BIT Sports Center, along with the BIT Stadium, frame an entrance to the extended exurb BIT campus. The project responds to the horizontality of the site with the panoramic landscape of Yan-Shan mountain chain as the background. The project bases its tectonic on amplitude and trajectory projection – the major study areas of BIT – to stretch its formal expression on a flat site, allowing the free flow of people and thought beneath it. Besides, the parametric expression of the project also addresses the historic context of Beijing by reinstating the grayish monolithic tone in the materiality of Hutong and Great-wall. The project encompasses a basketball hall with 3,000 seats, a ten-lanes swimming pool, and spaces for martial art, taekwondo, table tennis and more. As the building form is kept simple and compact for the climate, the challenge lies in revolutionizing big-box typology from within: The humanistic landscape is created through crafting the programmatic and spatial complexity of the interior rather than the exterior. With Ludwig Mies van der Rohe's Universal Space and Cedric Price's Fun Palace in mind, the project creates an open field of porous campus that encourages visual and physical access to abundant activities. Communal space with various scales and flexible spatial definitions is thus created for new forms of networking, gathering and group activities.



c



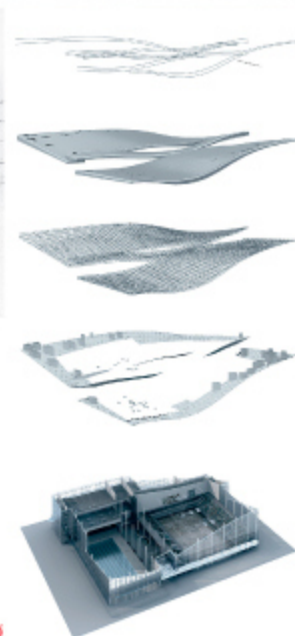
d



e



f



g

# Hallucinate Design Office

Portrait  
Hallucinate Design Office

Studio Location  
Shenzhen

166  
167

**a United Imaging Booth**

Location  
Chicago, IL, USA  
Completion 2018

**b Dissona XIII HQ**

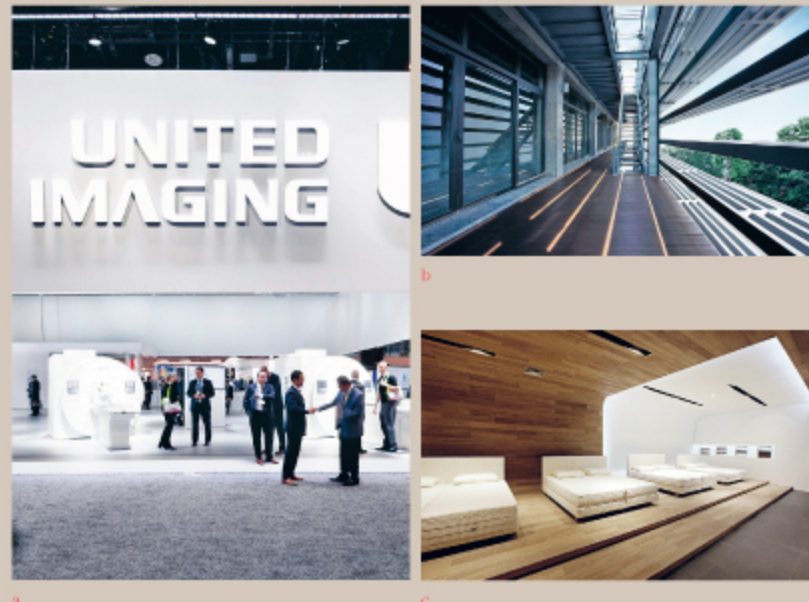
Location  
Guangdong  
Completion 2008

**c Coco-Mat Store**

Location  
Shenzhen  
Completion 2009

Hallucinate Design Office is a multidisciplinary award-winning design organization working creatively in the fields of interior, graphic and architecture. It was founded in 2007 by **Wenliang Wang**, born in 1967. The studio holds on to professional attitude, interpreting and exploring the relation between space and humankind, and aims to create new design paradigms. The architects of the office coming from different expertise and cultural backgrounds, work on a wide range of project scope from high-end commercial projects to the most creative and fun works. For Hallucinate the core values of design are thoughts and reflection based on its constant consideration towards people, things, happenings, and surroundings. The studio endows its works with its own unique design language and philosophy.

Wenliang Wang



# Midwest Inland Port Financial Town



## Location

99 Gangwu Boulevard, Xi'an  
International Logistics Park,  
Xi'an, China

Building type commercial

Completion 2016

Client Maike Group

Gross floor area 320,000 m<sup>2</sup>



Financial Town is a modern trading and logistic platform that offers integrated transportation, warehousing, freight forwarding and information services. The project was created for Maike Metals Group which is one of the biggest non-ferrous metal suppliers and traders. The interior design of Financial Town was designed beyond the city's geographical features for a balanced presentation of historical elements in an open perspective. An open and tranquil style was used and the design features a luminous roof and the large-gridded digital walls that blur the boundaries between reality and imagination. Modern technology and the architecture itself create a surreal surrounding. Light falls in through the three black metal pillars of different heights to the ceiling of the lobby and forms a diffuse reflection through the geodesic dome. The interior walls are covered with grids formed by tailor-made extruded aluminum sections of special dimensions melded with LED P60 electronic display units. Hallucinate has intentionally abandoned the conventional approach in pursuing softer boundaries between the three dimensions in order to enable a smooth, undisrupted visual sight from the floor all up to the ceiling. In the lecture hall, the ceiling comes in the shape of folded paper to reduce sound reflections and avoid excessive light onto the presentation screen. Overall Financial Town is a fascinating place of modern and futuristic vision which combines design and technology.



c



e f



d



g



h